

Trustees Approve Student Union Plan

The Comenian

MORAVIAN COLLEGE  STUDENT WEEKLY

Volume LXII

Bethlehem, Pa., Friday, October 23, 1959

Number 5

Bedics Chosen Class President For Freshmen

Dick Bedics was chosen president of the freshman class in an election held Monday and Tuesday in the lobby of Comenius Hall. Elected to serve as vice-president was Charles Bledsoe.

Bedics, an elementary education major, is a member of the football team. Bledsoe is an English major.

Others Chosen

Georgeane Billiard was chosen class secretary. She is majoring in elementary education.

Winifred Hearn, a psychology major, will serve as treasurer for the class.

Chosen as representative to United Student Government was Bart Palenchar. He is enrolled in the pre-medical course.

All but Bledsoe, who lives in Winston Salem, N. C., are residents of Bethlehem.

Foreign Life Is Discussed At Convocation

Opinions on study and life in Europe were discussed by eight student participants at yesterday morning's convocation in Johnston Hall.

Robert P. Snyder, director of development, presided. The program was concluded with a report on the student union project by Griffith Dudding, chairman of the Student Union committee.

Jutta Leheis, a native of Germany, who has been in this country for two years, opened the discussion.

Another former resident of Germany, Ralph Neuhaus, continued the discussion with a description of the state schools.

Susan Astbury spoke about her summer tour of Europe which was taken with a group of Temple University students.

Joanne Scott, a freshman who has studied at the University of Glasgow, Scotland, commented upon the seriousness of European students.

A sophomore, Bela Guylas, told of his experiences during the Hungarian revolution and how he fled from the country.

Colin Aldersley, from the West Indies, spoke of education at the schools he attended in England.

Judy Noll contrasted the pace of life in the United States with that of Brazil, where she spent eight years.

The discussion was concluded by Ted Wilde, who spoke about university life in Germany. Wilde studied last year at the University of Munich.

Main Hall Restoration Work Approaching Completion

The restoration of Main Hall, South Campus, is now in the process of completion. Work this week on the women's dormitory has been directed toward making more efficient the facilities housed within the building, and at the same time, restoring parts of the historic structure to their former stature, according to Robert P. Snyder, director of development.

Women's Attire Is Discussed By Sartwell

"I'll have to rely on their responsibility as Moravian women students to comply with this rule," stated Halcyon Sartwell, Dean of Women in an interview early this week.

This statement concerned the Bermuda shorts "situation" which has arisen on the Moravian College campus. Dean Sartwell said in the interview that women students, both residents and non-resident, were not permitted to wear Bermuda shorts to classes, in town or in the student lounges.

She stated that this rule was put into effect when the two colleges merged in 1953 and had been in effect ever since. When asked why the rule had been relaxed in the past, Dean Sartwell said that the rule wasn't relaxed. She asserted, "The rule existed all along and was expected to be followed. It wasn't followed; therefore it had to be enforced."

(Cont. on p. 5, col. 4)

Snyder stated earlier this week that the Annie S. Kemerer Museum and Moravian College have agreed upon a joint program involving the use of the first floor of Main Hall.

"The program will permit the Annie S. Kemerer Museum to permanently locate collections of the Ante Bellum period (1830-1860) together with Moravian College antiques in the north and transverse hallways and the double parlors and three single rooms continuous to them," stated a report issued by the development office. This area will be identified as the Annie S. Kemerer Museum.

Lower Floor Reorganized

The lower floor of Main Hall has been reorganized to accommodate all student facilities. The west entrance from the carriage-way will be the residence entrance, and the inner area to the left of the entrance hallway will contain the receptionist's desk, the public address system, and telephones.

The north room off the hallway will contain the office of the Director of Women's Residence. The south room off the hallway (form-

(Cont. on p. 6, col. 2)

USG Organizes Student Group On Evaluation

A committee to work with college President Raymond S. Haupt on a student evaluation program has been organized by the United Student Government.

This action was taken by USG president Peter L. French at Tuesday's meeting, held in Comenius 1 at 7:30 p.m.

The program will entail an evaluation of the faculty and administration of the college by students. Jean Bassford and Richard Ruth were chosen co-chairmen of the committee.

Junior class president Jack Jacob brought up the problem of collection of class dues. A suggestion was made to include the dues in the \$25 student activities fee. Jacob was made chairman of a committee to investigate this and other possibilities.

Neil Eskolin, associate editor of *The Comenian*, made an announcement that all organizations

(Cont. on p. 5, col. 3)

Three Teachers Are Promoted; Budget Okayed

The Moravian College Board of Trustees, at a regular bi-annual meeting held on the campus last Thursday and Friday, approved in toto plans for the student union building.

The board authorized the architect to proceed with the preparation of construction drawings, and, upon completion of this, the executive committee will ready the specifications for bids by contractors.

Robert P. Snyder, director of development, stated this week that a "spring starting date" for actual construction of the \$865,000 building is anticipated.

Three Teachers Promoted

At this same session, the trustees announced the promotions of three faculty members. Miss Johanna S. Ott was promoted from instructor to assistant professor in mathematics. Michael Elias, modern language instructor, was named assistant professor.

Mrs. Anna T. Riley was elevated from the position of assistant professor to associate professor of art.

The board also approved a fiscal budget of \$1,200,000.

A projected plan for North Campus reorganization was reviewed and approved. The long-range plan, submitted by Clarke and Rapuano, campus architect-

(Cont. on p. 3, col. 2)

Twelve Candidates Selected To Vie For Weekend Queen

Twelve candidates were chosen this week to compete for Homecoming Queen. Elections for the Queen and her court will be held Monday, Oct. 26 and Tuesday, Oct. 27, in the lobby of Comenius Hall.

Each member of the student body will vote for five out of twelve candidates, who were selected by their respective classes.

The girl receiving the highest number of votes will be Queen and the four with the next highest will comprise her court.

The candidates are: seniors—Mary Lou Clewell, Dawn Dangler, and Fran LeTowt; juniors—Joan Albrecht, Nancy Helms, and Ruth Mauch; sophomores—Mary Cali, Joan Karustis, and Barbara Stefanavage; and freshmen—Judy Coddington, Marilyn Landrock, and Janice Stever.

Theme is 'Harvest'

"Harvest" will be the theme of this year's Homecoming weekend. Included in the weekend activities are the crowning of the Homecoming Queen, parades Friday night and Saturday afternoon, a football game with Albright College, dormitory and fraternity house decorating contest, and a dance sponsored by the Social Activities Committee on Saturday evening.

Al Bornstein, co-chairman of SAC, has emphasized that all floats for the parade will be judged "strictly on a 'Harvest' theme." Deadline for submitting float ideas is Wednesday, Oct. 21.

Alpha Epsilon Pi Welcomes Pledges

Alpha Epsilon Pi sorority welcomed its new pledge class at a punch party held in their sorority room Oct. 19. New pledges are Judy Debray, Kathy Graves, Karen Kaprelian, Virginia Poulos and Sandra Thomas.

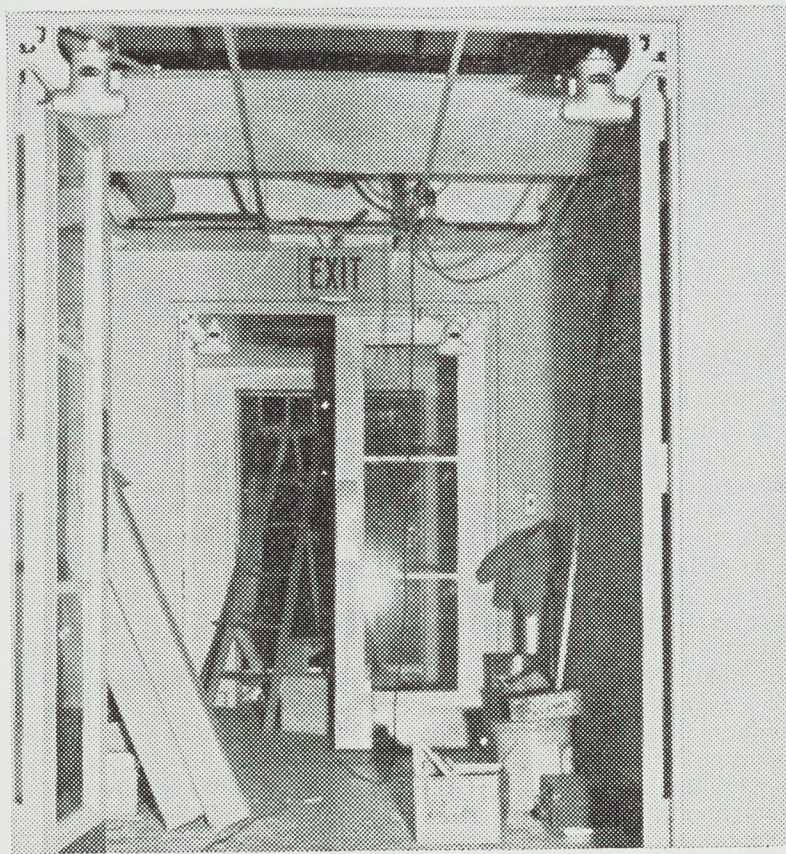
Business Meeting Held

A short business meeting was held immediately after the punch party. At this meeting the plans for the annual Alumni Brunch were completed. The Brunch will be held Saturday morning, Oct. 31 from 9 a.m. to noon.

TIES AND JACKETS

Dean of Men Harvey T. D. Gillespie has announced that men will be required to wear ties and jackets for the noon meal on Sunday in the North Campus dining room.

This action was taken by the Men's Dormitory Council upon recommendation of the dean.



Main Hall looked like this temporarily last week as restoration of the building was in progress. Photo by Galle

The Comenian

Published weekly at Moravian College, Bethlehem, Pa.

Friday, October 23, 1959

Editor, David A. Schattschneider '60

Associate Editor, Neil P. Eskolin '61

Business Manager, Paul Kadas '60

News Editor, Alan J. Lippman '61

Advertising Mgr., Cynthia Geiman '61

Sports Editor, George Fiegel '62

Feature Editor, George Mitchell '62

Photography Editor, Ed Borger '60

Circulation Mgr., Dick Hartzell '61

Ass't. Business Mgr., Wilma Bennewis '63

News Staff: George Banash '63, Sandy Getter '60, Jim MacDonald '61, John Schlegel '62, John Schultheis '62, Sandy Walker '63, Ned Wilson '63.

Sports Staff: Pat Boyle '60, Joe Castellano '61, Bob Fatzinger '60, Jim MacDonald '61, Bill Pysner '63, Gene Salay '60, Jay Scholl '63, Fred Schuster '63, Gary Straghan '63, Ted Wilde '60

Feature Staff: Dave Howard '63, Sandra Kromer '61, Regina Lawrence '63, Charles Napreunik '63, Stephanie Rights '62, Ruth Welch '61

Photography Staff: Chester Galle '61, Victor Novak '63, Michael Oser '63, Grove Stoddard '63

Copy Staff: Betty Hicks '63, Carla Nowack '61, Barbara Senneca '61

Make-up Staff: Jane Albrecht '62, Joel Nadler '63, George Sites '60

Circulation Staff: Nancy Helms '61, Terry Male '61, Cathy McCann '61, Elaine Nicholas '61

Advertising Staff: Fred Harberg '60, Judy Robinson '63, Ellen Smith '63

Faculty Advisor: Dr. Lloyd Burkhart

Published at the Globe-Times Printery

Represented for national ads by National Advertising Service, Inc.
420 Madison Avenue, New York City

Member: Associated Collegiate Press: Intercollegiate Press

Interpretation . . .

Early this week light was cast on a bothersome problem, namely the Bermuda shorts "situation."

In defending her position, the Dean of Women stated that society must have its rules to function and that this is a rule of our society and therefore must be obeyed.

The basic problem, however, is not a question as to the validity of a much disputed rule, but rather as to the validity of the interpretation of this rule which is being enforced at the present time.

The rule in question is a fairly clear one. The Dean, however, has seen fit to interpret it as applying to women day students as well as dorm students, although the rule is found in the student Handbook section specifically labeled, "Women's Dormitory Code." An explanation of this interpretation is certainly necessary.

She has also admitted that the rule hasn't been followed in the past. Yet there appear to have been no tragic incidents resulting. Perhaps a re-examination of the rule itself is necessary rather than an attempt at enforcing a rule whose necessity is doubted.

In the future, consultation between students and administrators involved must become a necessary step before interpretations of rules are laid down. Perhaps through this means unfortunate situations such as this can be avoided.

Better! . . .

Within a short time the renovating of the South Campus renovations will be complete. When this time arrives the Main Hall residents will be able to return to living in a more peaceable atmosphere and new, modern facilities will be available for everyone's use.

There have been complaints heard concerning the cost of the project and the question has been raised "Why do it all over again this year?"

In considering these points, several things must be kept in mind. First of all, no one who has been around for the last few years will deny that extensive renovations of Main Hall were desperately needed two years ago. These were accomplished during the summer of 1958.

The result was that the Main Hall interior was transformed into a completely modern setting, and the outside of the building was restored to its original appearance in keeping with the development plans of Historical Bethlehem, Inc.

This past summer saw the beginning of re-renovations of the first two floors at no expense to the college. These changes are being paid for by the Annie S. Kemerer Museum. The results are several.

In the first place all facilities which will be used by the students are now located on one floor, thus centralizing these areas and making them more accessible to all students.

In the second place, the college will now have the beginnings of a definite historical project on the campus which should increase the straggling academic attitude.

With these items under consideration the intelligent student will realize that despite the questionable technique of renovating similar areas twice in two years, the final results, soon to be achieved, far outweigh the inconvenience.

KEEP OFF THE GRASS!!

by Neil Eskolin

Good morning out there in newspaper land. I'd wave and smile, but through this medium I don't think you'd get the effect. Hey, come on, don't hold the paper so close to your face—they say even your best friend won't tell you—but I will) you forgot to brush your teeth this morning, didn't you!



Usually matters pertaining to the little man with the bow and arrow are taken care of by my feminine colleague. However it has come to my attention that two members of the student body have recently taken such steps as would merit consideration in this column.

Jim MacDonald and Carol Bosco of Staten Island, N.Y. were pinned during this past summer and this momentous occasion has gone by unheralded until this moment—Congratulations! More recently, last Friday in fact, Wayne Shugart and Sandra Crotts, a southern belle from Winston Salem, also were pinned.

It seems as through the library has devised a new method of raising funds. In the basement of the library annex, skilled carpenters have been busy constructing small enclosures resembling chicken coops. It has been rumored that the librarians are going into the poultry business and plan to donate all profits to the library building fund. This is certainly a benevolent and unselfish attitude on the part of the librarians and if this rumor is true, I suggest we all do our share and take turns feeding the chickens. Food will be provided at the school's expense.

This business is expected to be quite an extensive enterprise and so elections have been held to choose a union representative. I hear that Edgar Snyder has been selected to be shop steward.

You are probably all wondering what has happened to the 1959 yearbooks. This has not been authenticated but inside information (Cont. on p. 6, col. 1)

The Mail Box

Appreciation . . .

To the Moravian College Community:

On behalf of the Triangle Honor Society, I would like to extend our sincere gratitude and appreciation to all those who had a part in our Family Day observance.

Especially we thank the Women's Activities Committee, headed by Miss Dora Thomas, for the splendid job they performed in preparing Johnston Hall. We wish to thank Dr. Raymond Haupt, Mr. Robert Snyder, Mr. Ernest Enck, members of the faculty and administration who participated and helped to make this a memorable day for our guests. Special thanks to Mr. and Mrs. Lear Neiswender, who made the "coffee-hour" after the game an efficient and successful one.

IF THEY KEEP CHIPPING AWAY,
SOUTH CAMPUS WILL END UP LIKE
ROME SOMEDAY



African Student Claims British Exploit Kenyans

by David Howard

The Class of 1963 has as one of its members Francis Mwhia from Kenya. Perhaps you are wondering how a student from a land so distant came to Moravian. Francis chose his college in a manner much like U.S. students do. He received a scholarship from Moravian and had his transportation paid by the African American Student Foundation. Included among this organizations sponsors are Harry Belafonte and Jackie Robinson.



Francis is twenty three, and attended the Royal Technical College of East Africa. This British colonial school grants sub-university diplomas and does not offer the variety of subjects that our (Cont. on p. 5, col. 2)

HEY! What's Goin' On?

Friday, October 23

7:30 p.m. Movie, "Red Shoes," Johnston Hall

7:30 p.m. Omicron Gamma Omega, North Campus Chapel

Saturday, October 24

Football, Lebanon Valley, Away
Cross Country, Lafayette, Away
2-5 p.m. Art Contest Exhibition, Johnston Hall

6:00 p.m. Banquet, Northwest Little League, Johnston Hall

Sunday, October 25

2-5 p.m. Art Contest Exhibition, Johnston Hall
5:15 p.m. Fellowship Supper for Vespers, South Campus Dining Room
6:00 p.m. College Vespers, South Campus Chapel

Monday, October 26

7:30 p.m. Olympics à la Mo, Johnston Hall

8:00 p.m. Women's Club, Main Hall, Reception Lounge

Tuesday, October 27

11:30 a.m. Veterans Association, Comenius 8

11:30 a.m. Omicron Gamma Omega, Comenius 201

4:00 p.m. Hockey (women) Marywood, Home

6:35 p.m. Women's Dormitory Council, West Hall

7-9 p.m. Bethlehem Council of Church Leadership, Comenius Hall

Wednesday, October 28

Afternoon — Mineralogy Field Trip

Cross Country, Franklin and Marshall, Home

10-11 a.m. Social Hour, Johnston Hall Lobby

7:00 p.m. Moravian Grotto, Science Bldg.

Thursday, October 29

4:00 p.m. Faculty Meeting, Comenius 304

7:30 p.m. CCA, Johnston Hall

Gratefully yours,

Gene C. Salay

President, Triangle Honor Society

Rader Discusses Selection Of 'Who's Who' Nominees

The new method of selecting Moravian College's nominees for "Who's Who in American Colleges and Universities" was discussed by Marlyn A. Rader, Dean of Instruction, in an interview held last Wednesday morning.

The Dean said, "We have not been quite satisfied with the way this has been done." He explained that the Executive Committee discussed the selection procedure over the summer and decided upon the new method.

Under this new plan, all faculty members were asked to nominate members of the senior class for the honor. Student organizations, whose officers were listed in the **Student Handbook**, were also requested to submit names.

Rader stated that requests for nominations were sent out to 36 campus organizations and returned by 16.

He also said that the Executive Committee investigated various possible candidates on its own and then reviewed the names submitted by the faculty and student organizations.

The next step in the process, according to Rader, is to submit the names to "Who's Who" for their confirmation. The individuals selected will then be notified.

The criteria for selection were also reviewed by the Dean. These include scholarship, participation in extra-curricular activities, service to the school, the potential of future leadership and membership in the present senior class.

'Red Shoes' To Be Shown This Evening

"The Red Shoes," a movie sponsored by Concert-Lecture Committee, will be shown tonight free of charge in Johnston Hall at 7:30 p.m.

Based on a fairy tale by Hans Christian Anderson, the narrative part of the film tells the story of a rising ballerina forced to choose between her career as a dancer and her marriage to a young composer. The Red Shoes ballet, in which she dances the lead, has a theme which essentially duplicates her own struggle against overwhelming ambition.

Moirra Shearer and Robert Helpman of the Sadler's Wells Ballet and Leonide Massine of the Ballet Russe dance the main parts in the ballet. Marius Goring plays Miss Shearer's husband in the story and Anton Walbrook portrays the head of the ballet troupe in which she becomes a star.

The Academy Award winning movie is the first feature-length film to present a ballet in its entirety.

1,000 Awards Will Be Given By Foundation

The Woodrow Wilson National Fellowship Foundation has announced the opening of competition for its fellowships for the academic year 1960-61. The chief purpose of the fellowship program is to offset the critical shortage of qualified college teachers by encouraging college seniors of outstanding ability to consider college teaching careers.

1,000 Awards

The Wilson Foundation annually awards 1000 fellowships for first-year graduate study at any university of the recipients choice in the United States or Canada. Woodrow Wilson Fellowships carry a stipend of \$1500, plus full tuition and fees, and, in the case of married Fellows, a dependency allowance for wives and children.

The program is open to college graduates in the natural and social sciences and in the humanities. Both men and women are eligible, and there is no limit on the age of the candidate or the number of years he may have been out of college.

The Woodrow Wilson Foundation does not accept applications directly from students. Candidates for the award must be nominated by a faculty member. Nominated students are invited to declare themselves as active candidates for the award by completing the necessary application forms.

October 31

The closing date for nominations for the academic year 1960-1961 is Oct. 31. Nominations should be sent to the Chairman of the selection committee for the region in which the prospective candidate is now located. A list of the fifteen regions and the names of the Regional Chairmen may be obtained from the Foundation's National Headquarters in Princeton, New Jersey, or from the Woodrow Wilson representative or any campus in the United States or Canada.



THE 1959 HOMECOMING QUEEN CANDIDATES—Moravian College students will vote for the Queen and her court on Monday and Tuesday in the lobby of Comenius Hall. Students will vote for five of the above 12. Top to bottom, left row, Judy Coddington, Marilyn Landrock, and Jan Stever, freshmen; second row, Mary Joan Cali, Joan Marie Karustis, Barbara Stefanavage, sophomores; third row, Joan Albrecht, Nancy Helms, Ruth Mauch, juniors; fourth row, Mary Lou Clewell, Dawn Dangler, and Fran LeTowt, seniors.

Fellowships Are Offered By Danforth Foundation

Moravian College has recently been informed by the Danforth Foundation that it is entitled to nominate "two or three" applicants this year for the Danforth Graduate Fellowships.

Dr. Otis H. Shao, associate professor of government, has been named by President Raymond S. Haupt as Liason Officer for the Foundation.

Applications from senior men must be made by Dec. 1, according to Shao. He announced that a screening committee of Dr. Alan F. Herr, chairman of the English department, Kenneth A. Bergstresser, associate professor of biology, and Marlyn A. Rader, Dean of Instruction, has been established to assist him in selecting the applicants.

He commented that the fellowships are given to approximately 100 men preparing for college teaching who, at the time of applying, have had no graduate study.

Financial Assistance

Each recipient, he said, will be given financial assistance according to his need, limiting the annual maximum grant to \$1,500 plus tuition and fees required of all graduate students for the single man; and \$2,000 plus tuition and fees required of all graduate students who are married, with an additional stipend of \$500 for each child.

Shao said that selection is made on the basis of outstanding academic ability, personality congenial to the classroom, and integrity and character, including serious inquiry within the Christian tradition.

The appointment is for one year, he continued, with expectation of annual renewal through

the years of graduate study, if the graduate record is distinguished and the relationship proves mutually agreeable.

It is possible for a Danforth Fellow to hold other fellowships concurrently, Shao stated.

Trustees . . .

(Cont. from p. 1, col. 5)

ural consultants, tentatively details relocation and construction of north campus buildings through 1980.

Financial Arrangements

In relation to the student union building, the trustees authorized the college to borrow additional needed funds of \$230,000 to complete financial arrangements for the project.

According to Snyder, the source of funds for the building is as follows: \$530,000 from a government loan, \$105,000 from student fees and matching money to be available by the time of completion of the building, and \$230,000 which the school has been authorized by the board to borrow from other sources. The total, \$865,000, will be sufficient to cover the expense of the project.

Thirty trustees attended the sessions. They toured the campus, visiting new dormitories and viewing campus improvements, in addition to conducting their regular business sessions.

The board will reconvene in the spring.

CCA Meetings Feature Talks By Theologians

Roger Kimball, Seminary student, spoke and led a discussion on the problems which Christians should be aware of in the foreign mission field at a meeting of Campus Christian Association held last night.

George Ensworth of the Inter-Varsity Christian Fellowship was guest speaker at the group's meeting last Thursday. His approach to, and understanding of, the questions and problems which arise in the minds of many college students concerning their Christian responsibility was discussed.

CCA meets every Thursday evening at 7:30 p.m. in the George Washington Room. Meetings include Bible discussions and outstanding speakers.

The group is responsible for the sponsoring of a vesper program on the first Saturday of every month at a nearby convalescent home. The group is also helping to support an orphan boy in Germany.

Seniors Nominate Students For Queen, Who's Who

Three candidates for the 1959 Homecoming queen and fourteen candidates for "Who's Who in American Colleges and Universities" were nominated by members of the senior class at a meeting held at 11:30 a.m. Tuesday in Johnston Hall, room 9.

Named as Homecoming Queen candidates were Mary Lou Clewell, Dawn Dangler, and Fran LeTowt.

The following students were nominated for "Who's Who in American Colleges and Universities": Fran LeTowt, Eleanor Rellinghaus, Dora Thomas, and Nancy Traubitz.

Charles Bartolet, Griffith Dud-ding, Peter French, Ronald Fradeneck, Frederick Harberg, William Keller, Joseph Powlette, Gene Salay, David Schattschneider, and Ted Wilde.

In other business, William Keller, class president, announced that he will head a committee to contract various nominees for class advisor.

Faculty members suggested included Dr. Lloyd L. Burkhart, professor of English, Dr. Daniel R. Gilbert, associate professor of history, Mr. Jack R. Ridge, assistant professor of physics, and Dr. Otis H. Shao, associate professor of government.

Frederick Harberg was appointed by Keller to head a committee which will investigate the selection of a class gift. Other members of the committee are Theodore Neidengard and Ralph Shields.

WAC To Sponsor A Social Gathering

The Women's Activities Committee will sponsor a Social Hour on Wednesday, Oct. 28 from 10-11:30 a.m. in the front lobby of Johnston Hall. Cider and doughnuts will be served free of charge to the entire student body.

30 Students To Participate In Conference

Thirty Moravian students are expected to attend the tenth annual Pre-Medical Conference at the Woman's Medical College in Philadelphia on Saturday, Oct. 31.

The group, which is sponsored by Dr. Albert E. H. Gaumer, professor of biology and Kenneth A. Bergstresser, associate professor of biology, will leave by bus in the morning.

Tour Planned

A tour through the hospital and the psychiatric clinic, both of which are affiliated with the college, will take place in the morning. During the afternoon a symposium is scheduled between the guest students and the faculties of the medical and dental schools in the area.

Probable questions for the symposium are admission requirements, what is expected of undergraduate and graduate students, and the curricula offered at the schools.

The trip is being sponsored by the Alpha Epsilon Delta fraternity, Philadelphia chapter. It is a national honorary pre-medical society.

The conference is conducted at a different medical school in the area each year. The conference was held last year at the University of Pennsylvania.

The Sports Story

by George Fiegel

Unfortunately, my predictions in the past two weeks haven't been the best they could. Out of 13 predictions (lucky number) I had nine wrong and four correct. The first week my predictions were 17% correct and the second week it was 43%, leaving an average of 31% for the percentage right. They say if you have a percentage of 70%, you know how to predict well. As you might have noticed if you take my prediction in reverse you will have the equivalent of good predictions.



The cross-country team is not doing very well for themselves these days. Although they ran fast teams in their first two meets, the third one was not particularly hard. The team lacks enthusiasm and unity. The first two or three positions need support from the next few positions and there is usually a gap between these two. This leaves the opposing team a chance to capitalize. This is a tough sport and team spirit is most important. I think without this spirit a team cannot stand and this is slowly happening to our cross-country team.

Our gang of Greyhounds travel to Annville to play the Dutchmen on their home field. Mo-Mo will take Lebanon Valley by at least one touchdown. Although Moravian lost last year 14-0, with the playing like that against Penn. Military, Lebanon Valley should be "no sweat" at all. Gettysburg will walk all over Muhlenberg at the Mules' homecoming game. The Bullets, having beaten Muhlenberg every time since 1950, will do it again with a score of approximately 28-12.

Lehigh will face Rutgers tomorrow at New Brunswick. Coach Bill Leckonby's Engineers will meet a defeat at the hands of Rutgers by a score of 14-6. The Lafayette Leopards will upset the Bisons this weekend. The Leopards host Bucknell at their own field and if they play well will be able to duplicate last year's decision. Lafayette won. At Cottingham Stadium Easton High hosts the Hurricanes of Bethlehem, and will beat the Red and Blue 33-12.

Our Greyhound Gridders were really moving last week when they faced Penn. Military. In the tight spots they played a slam-bang game and pulled their way to the top. Tomorrow they play a hard hitting team. With all the power concentrated in the center of the line Coach Calvo is devoting his practise to passing and end runs. With the addition of the unique double wing formation and the high condition of the morale of the team Lebanon Valley should bow at the hands of Moravian.

That's the sports story for this week.

Houndettes Stage Playday: Host Local College Teams

On Family Day the Moravian Houndettes Hockey team was host for a playday with Albright, Cedar Crest, Muhlenberg, and Kutztown.

Although Kutztown was victorious, winning 3 and tying 1, the Houndettes gave their experienced opponents tough competition. Moravian, tying with Muhlenberg and Albright for 3rd place, beat Albright 1-0, tied Muhlenberg in scoreless ball, and lost to Cedar Crest by a score of 1-0, and to Kutztown 2-0.

Judy Laning, left inner, scored Moravian's only goal. Other veterans of the team are Judy Clay, left wing; Betty Ann Dickman, center forward; Barbara Snyder, right inner; Faith Mong, center half; Vickie Tinnes, right back; and Cynthia Geiman, goal keeper.

New additions to the team are Jan Davis, right wing; Joan Raidline, left half; Judy Studwell, right half; Nancy Trach, left back; and Carol Horscroff, right inner.

Although getting off to a bad start and dropping their two openers to Muhlenberg and Centenary, 4-0, and 3-1 respectively, the Houndettes looked much better on the field on Saturday than previously. With this valuable gain of experience and the fine coaching of Miss Jane Ackermen, a former Moravian hockey star, the team should prove much stronger in its remaining games.

On Oct. 21, at 3:30 they will play host to Berg, Oct. 27 at 4:00 they will host Marywood, and on Nov. 14, they participate in a playday at Albright.

There is also a soccer game scheduled with Upsala on Nov. 7 at home.

FALL FOCUS Sal DeLuca—Guard

Sal DeLuca is the topic of this week's Fall Focus. Sal, a guard from Phillipsburg, is 5 feet 9 and weighs 180 lbs.

While attending Phillipsburg High School, Sal participated in four years of football and basketball and earned six letters.

It was during his high school football days that Sal received his greatest sports thrill. In 1954 Phillipsburg defeated Allentown 14-0. Both teams had an unblemished record before that date.

Sal is a senior majoring in Sociology and plans to become a lawyer. His campus activities include Sigma Phi Omega fraternity, representative to the U.S.G. and Inter Fraternity council, the Social Activities Committee and he is a member of the Varsity M Club.

His hobbies are going to football games, reading and watching television.

When asked what he thought about the Greyhound football team, Sal said, "I think we have a good ball club and with effort and thinking we can win most of our game this season."

Runners Defeated In Close Decision For Third Loss

Moravian's cross-country team bowed to Penn Military College 26-31 on a perfect Saturday afternoon. George Fiegel and Jim Worman paced the Harrier squad by capturing third and fourth place with times of 28:24 and 28:37 respectively. The loss was the third of the season for the Hounds.

Tie For First

Tasket and Dougherty led the way for PMC as they finished in a dead heat for first place with a exact time of 27:06.

Other Moravian runners placing in the top ten were: Bill Rinker, Rod Wetmore, Tom Grammes, and Dave Borst captured seventh, eighth, ninth, and tenth place respectively.

Also competing for the Harriers were: Dick Gross, Lou Brown, Jack Jacobs, Rod Rathbun, and Terry Holacker.

P. E. Program Offers Girls New Sports

Eight new athletic skills are being planned for the women's physical education program by Marie Ackerman, instructor in physical education for women.

They are beginning and intermediate horseback riding, golf, social dancing, Swedish gymnastics, track and field, and possibly archery.

These will be in addition to beginning and intermediate swimming, team sports including basketball, softball, soccer, volleyball, and badminton.

Individual sports will include tennis, track and field, folk and modern dancing.

There will be varsity teams in hockey, soccer, basketball, tennis and swimming, according to Miss Ackerman.

Bowling League

Besides an interest group in fencing, there will be an intramural bowling league directed by Miss Ackerman and sponsored by the Women's Athletic Association.

There will be several teams of five and interested women are asked to sign up in the girls' locker room or to see Miss Ackerman or Phyllis Zwarych.

The possible times for league action are Monday and Friday afternoons with evenings to be arranged.



Hounds Invade Annville In Quest Of Third Win

The Moravian Greyhounds invade Lebanon Valley at Annville tomorrow in quest of their third victory. Tomorrow's meeting will be the twentieth meeting in a series that dates back to 1902. Lebanon Valley holds a 13 to 5 lead in games won, with one tie. Last year, Lebanon Valley emerged on the long end of a 14 to 0 score.

The Flying Dutchmen, despite a 2-2 record, should prove strong opposition. Last week they upset a favored Muhlenberg team 12 to 7. The Lebanon Valley forward wall averages 222 lbs., thanks mainly to the bulk of Ken Longnecker who weighs 335 lbs. Along with Longnecker the Dutchmen have 12 other lettermen.

Against the Dutchmen, Rocco Calvo will field a team which roll-

ed over Wilkes and P.M.C., being beaten only by powerful Juniata.

The Greyhound forward wall which averages 205 lbs. from tackle to tackle may have a tough time moving. The Hounds may have to run the Dutchmen ends.

Calvo will probably start sophomore Russ DeVore at quarterback, Dave Coe at fullback, and Ron Meyer, Bill Hershey or Bucky Yelovich in the halfback.



Russ DeVore flips a long one to John Olson to put Moravian in scoring position during last Saturday's dramatic game with Penn. Military College. Photo by Galle

Hounds Come From Behind; Defeat PMC In Last Half

The Moravian Greyhounds ran their total to two wins against one loss last Saturday by coming from behind a six point deficit to win handily over Pennsylvania Military College by a score of 26-12.

The first score of the game was made by Dave Coe, fullback, as he went through the Cadet line from five yards out. After an exchange of fumbles the Greyhounds moved the ball 55 yards in 10 previous plays.

A standout play in the drive was a 31 yard pass play by Russ DeVore to John Olsen which put the ball on the visitors 10 yard line.

There was no more scoring during the rest of the half, although the Cadets pulled off two excellent plays in a desperate attempt to score before the half ended. They moved the ball to the Moravian three on several quick plays including 20 and 33 yard aeriels.

Cadet quarterback, Bob McElroy, opened the scoring in the second half by intercepting a Greyhound pass and racing 35 yards down the sidelines to tie the score at 6-6.

Midway in the quarter, end Bob Thomas plucked a Greyhound fumble out of the air and raced 29 yards before being brought down from behind. Gus Chew then raced around end from the six to put the Cadets ahead by a score of 12-6.

After several spectacular plays by DeVore, John Yelovich tied

the score at 12-12 by scoring on the option play from six yards out.

Early in the final period, the Hounds drove 36 yards with DeVore carrying the ball around end for five yards. DeVore then hit end Paul Noonan for a two point conversion making it 20-12.

The final score of the game came after a bad punt by PMC that only went to the 39. The Hounds moved the distance in four plays with Jim Frank going over from six yards out.

The victory was the second in three starts for Moravian while the Cadets now have a 2-2 record.

Coe was the outstanding runner for the Hounds by going 81 yards in 21 carries. DeVore and Yelovich went 91 yards on 17 carries combined.

Yelovich made an outstanding play in the last quarter by racing 44 yards around end for a TD, but the play was nullified as Moravian was penalized for clipping.

Statistics		
	Mor.	P.M.C.
First Downs	9	16
Yards Rushing	89	199
Yards Passing	77	77
Passing	4-11	7-13
Passes intercepted		
by	1	0
Punts	6-35.2	4-29.5
Fumbles lost	3	1
Yards Penalized	5	85

Two Groups Advise College On So. Campus Renovation

Moravian College, Annie S. Kemerer Museum, and Historic Bethlehem, Inc., have agreed upon a mutually advantageous South Campus restoration program.

In 1951 Annie S. Kemerer left an estate in excess of \$300,000 toward the establishment of a permanent community museum for the preservation and interpretation of the area's cultural heritage. The Museum, incorporated in 1954 as a non-profit organization, is administered by a self-perpetuating Board of Directors.

In addition to the capital bequest, Mrs. Kemerer also provided an unusually fine collection of furniture and art objects, largely related to two historical periods — the early National period (1776-1830) and the Ante Bellum period (1830-1860).

Non-profit Organization

Historic Bethlehem, Inc., an educational non-profit organization dedicated to safeguarding the heritage of physical history of the Greater Bethlehem Area, was organized in 1957 as a federation of individuals and organizations interested in preserving Bethlehem's architectural and historical heritage.

Joint Administration

The Annie S. Kemerer Museum and Historic Bethlehem, Inc. are jointly administered. A formal arrangement has been made between Annie S. Kemerer Museum and Moravian College anticipating the ultimate occupancy by the Museum of the restored Single Brethren's House as a permanent house museum containing collections of the Pre-Revolutionary period (1741-1775).

Frosh, Sophs Participate In Co-Olympics

The annual olympics between the freshman and the sophomores will be held on Moravian's lower athletic field this coming Monday.

Men's sports will be held in the afternoon and the girl's sports in the evening.

The men will participate in a tug-of-war, a short touch football game, football punt for distance, 100 yard dash, football throw for distance, and a wheel barrow race. The tug-of-war is worth 50 points and the others worth 10 points each.

Chairmen Selected

James Gano was elected chairman of the sophomore class sports and Dick Bedics was appointed chairman of the freshman class sports.

For the second part of the olympics a la Mo the women are participating in five sports. On the agenda is the obstacle race, baseball throw, basketball throw, 50 yard dash, and the candle race.

It is expected that the candle race and the tug-of-war will be participated in by both men and women students.

The olympics are being sponsored by the Women's Athletic Association and the Varsity M.

U.S.G. . . .

(Cont. from p.1, col. 4)

should submit information on future events to *The Comenian* office by 3 p.m. Tuesdays if they wished publicity. He advised that all organizations appoint a publicity director to handle this matter and work with the weekly concerning organizational publicity.

U.S.G. treasurer James MacDonald announced that a balance of \$1,379.13 exists in the treasury at the present time.

U.S.G. readmitted the Interfraternity Council as a member after a letter from John Marth of the I.F.C. requesting readmission was read.

In other business the group voted to accept eight new members to the elections committee. They are: David Bryant, David Cornelius, Paul Heist, Barbara Hooper, Raymond Knott, Edward Ressler, Barbara Snyder, and Arlene Tubio.

Joel Leeb was made chairman of a committee for the investigation of the process of readmission to USG.

Myron Meilike opened discussion on the feasibility of a student operated used-book store. He was appointed chairman of a committee to investigate this possibility.

African Student . . .

(Cont. from p. 2, col. 4)

American schools do, which is not conducive to receiving a well-rounded education. Like the rest of the freshmen, he is finding it hard to adjust to college routine. He feels the lack of attention and the position of "being on your own" is very difficult to get used to. However, Francis realizes Moravians' small student body and friendly atmosphere are definitely an advantage.

"Fascinating"

A person coming here for the first time forms many new impressions, and Francis summed his up in one word—"fascinating." He was particularly impressed by the high standard of living in the United States. Being an economics major he will be able to study our system in closer detail, and upon his return to Kenya Francis hopes to aid in the solving of the economic problems of his country.

British Rule

Kenya hit the front pages of newspapers a few years ago when a native uprising took place over British colonial rule. Francis commented that many political restrictions were set on the native Kenyans. (Even today passports for identification are required for travel within the country.) The situation went from bad to worse with the terrorists pledged to wipe out the white man. Now the Mau Mau has been broken and its terrorist bands scattered or herded into concentration camps. The state of emergency, proclaimed by the British colonial government at that time, has been unwarrantedly continued, however. This, of course, has hindered the economic prosperity and industrial growth of which the nation is capable.

Francis says that ninety percent of the Kenyans do not agree with the British colonial system of government. As he put it, "the British are trying to exploit Kenya, not trying to help her." The various native political parties each want self-rule for Kenya. They have no sympathy for Communism, however—the last thing they want is a dictatorship.



Cheerleaders activate the crowd at last Saturday's game against P.M.C. The gridders won convincingly, 26-12.

Photo by Borger

WPI Recommends Plan For Improving Relations

(I.P.)—Since good student-faculty relations facilitate the learning process, the following recommendations are made by the Committee on Student Scholarship, Motivation, and Morale at Worcester Polytechnic Institute:

To The Faculty

Attend as many student functions as possible.

Exercise due care in making comments which may be misinterpreted as sarcastic, or as belittling the intellectual powers of students.

Explain clearly in advance any special policies and procedures applying to their courses.

Learn the names of their students as soon as possible.

Make known their name and office number to their students, and that they post on their office door their class schedule, office hours, and home telephone number.

Invite students to their homes

when this is possible.

Give more emphasis to informing their students about unsolved and current problems in their special areas.

Bear in mind that low marks in the first series of examinations can be most discouraging to freshmen who received A's and B's in high school.

Select students to act as project leaders in those courses where this method is applicable.

Give consideration to means and methods of challenging the superior students to develop their fullest intellectual potential.

Make no remarks which may

(Cont. on p. 6, col. 4)

Sartwell Discusses Women's Attire . . .

(Cont. from p. 1, col. 2)

Location Cited

When asked why Bermuda shorts couldn't be worn, Dean Sartwell said that because Moravian College is located in a city and because Bermuda shorts are not generally accepted, "even if people say they are," the college feels they shouldn't be worn. "Society is governed by rules and regulations and this is a rule," Dean Sartwell commented further.

It was brought to the Dean's attention that many parents of the girls sanctioned the wearing of shorts. Said Dean Sartwell, "Permission of the parents doesn't enter into the problem. This is a college regulation."

Future Plans

The Dean stated further that when renovations on first floor Main Hall and the Femcee lounge are completed, the female students will be advised as to the type of apparel they will be permitted to wear. Until that time the wearing of Bermuda shorts will not be permitted in the Femcee and Femcee lounge.

In closing, Dean Sartwell said that she didn't anticipate anyone not complying with the Bermuda shorts regulation. However, some disciplinary action would be taken if they didn't comply.

Rule

Ed Note—The rule in question is found in the Student Handbook, section entitled, "Women's Dormitory Code," Article VIII, sections 7, 8, page 67. It reads as follows:

"(7) Women students may not wear shorts in public, i.e., on the street, to the movies, stores, restaurants, etc. Bermuda shorts are permissible at athletic functions and pep rallies, and they may be worn while engaged in decorating activities of various kinds and at affairs where the attire calls for bermudas.

"(8) Bermuda shorts, or other girls' slacks may be worn Saturday evening at the cafeteria supper and at all breakfasts; hair may set, if covered by a scarf, at Saturday supper."

-BAUERTANZERI-
Was ist los?

CLASSIFIED ADVERTISEMENT

WANTED
CAMPUS REPRESENTATIVE
by the
COLLEGE RECORD CLUB
to earn
\$100 (or more) in spare time
Write for information: College Record
Club, P.O. Box 1193, Providence 2, R.I.

**BEITEL'S Music Store
and Studio**
90 W. Broad Street
UN 7-4951

**GISA ADELE
Florist**
543 N. NEW ST.
UN 7-0171

Main Launderette
SELF SERVICE
PAY AND SAVE

George's Men's Shop
7 W. Broad St., Bethlehem
TRUMAN L. FREY, JR.
ROGER B. FREY

**CLARA'S
Luncheonette**
Barbeques
Steak Sandwiches
436 MAIN STREET

BOOKS—ALL KINDS
PAPER BACKS
Come In and Browse
**MORAVIAN
BOOK SHOP**
Opposite Hotel Bethlehem
GIFTS UN 6-5481

**Copenhaver Quality
Jewelers**
41 W. BROAD ST.
• Expert Watch Repairs •
LOWEST POSSIBLE PRICE

**KENDALL'S
Barber Shop**
67 Elizabeth Ave.
Across from Steel Field

**Fontaine's
DECORATORS**
33 W. BROAD ST.
FOR COLLEGE STUDENTS —
A Complete Line of
BATES BEDSPREADS

**FLORENCE'S
Beauty Shop**
511 NEW STREET

NSA Awarded Grant Toward Study Project

The U.S. National Student Association has been awarded a \$60,000 grant for a two-year human relations project, it was announced recently. Provided by the Field Foundation, Inc., the grant is the largest single contribution made by the Foundation to one organization.

Special Programs

The funds will be used to finance special programs for Southern campuses and student leaders "to create a deeper understanding of the complexities of race relations," according to Donald A. Hoffmann, president of the National Student Association.

The programs will emphasize discussion of all aspects of campus and community human relations problems and will be attended by student leaders from white, Negro, and integrated Southern campuses. Meetings will be held on an "open" basis, including presentation of segregationist, moderate and desegregationist viewpoints.

400 Colleges Represented

USNSA is a non-profit, student bodies at almost 400 American colleges and universities with a total enrollment exceeding 1,300,000. Founded in 1947, it is the largest national union of students in the world.

Moravian College joined the association last April.



Three out of about 650 campus visitors on the recent Family Day stop for a chat with several Moravian students. Shown (l. to r.) are William Fishel, Joel Nadler, Mr. and Mrs. William Nadler, Tobey Nadler, and Paul Heist. The event, which took place last Saturday, was sponsored by the Triangle Honor Society, and witnessed a 26-12 win for the Greyhounds over PMC following a luncheon in Johnston Hall.

Photo by Galle

Main Hall Restoration Program . . .

(Cont. from p. 1, col. 3)

erly the Hi-Fi room) will be the residence reception area and lounge.

The present coed lounge will contain card tables, a record player, and piano, and will serve as a recreational and Femcee overflow area. The room may be used by day or dormitory students until 5 p.m., being available only to dormitory students and their guests in the evening and on weekends.

The Femcee will operate as present. The entrance to the Femcee will be from the porch until 5 p.m.

Main Floor Plans

The main floor of the building will be under the jurisdiction of the Kemerer Museum. However, certain appropriate college functions will continue to take place in the area.

The Church Street entrance to the building will be discouraged for general use. This will not cause inconvenience, explained Snyder, since all student facilities have been relocated on the lower floor, with its separate entrance.

President's Office

The room to the west of the north hallway will be used as the south campus office for the president of the college and will also be available for use by the deans and other administrative personnel who might have occasional need for such a facility on south campus. At all other times the room will be open as an exhibition room.

The room east of the north hallway will be available for

scheduled meetings of the trustees, faculty, or student-faculty committee. At all other times the room will be open as an exhibition room.

The room north of the transverse hallway will be an exhibition room displaying decorative arts of the middle 19th century. The double parlors south of the transverse hallway will be used for exhibition, furnished as the old school parlors of the middle 19th century. The north hallway and the transverse hallway will also be used for exhibition.

The south hallway, reception room, closet, kitchen, powder room, and men's room will be considered Moravian College area, however, this area will be maintained by Annie S. Kemerer Museum.

Reception Room

The President's reception room will serve as the formal reception area of the College and will be available, on scheduling, for departmental teas or suitable receptions of student organizations. The room will always be available for appropriate reception of visitors and guests of the administration, faculty and student body.

"Tone"

According to Snyder, the renovations and refurbishing of Main Hall "should give real tone to the college."

The Annie S. Kemerer Museum is jointly administered with Historic Bethlehem, Inc., an educational non-profit organization dedicated to safeguarding the heritage of physical history of the Greater Bethlehem area.

Wesleyan Approves Plan For Auditing Of Courses

(I.P.)—The course without grade system at Wesleyan University has been unanimously approved by every teacher who has had a credit-audit student in his class. The teachers cited the system as a step towards Wesleyan's aim for "learning for learning's sake."

The course without grade system, commonly but incorrectly called the credit-audit system here, was originally proposed by the student curriculum committee. Under the system, each junior and senior, as a part of his regular quota of courses, is permitted to elect and designate in each semester one course for which he will be granted the usual academic credit but without an official grade on his record. This procedure has the following provisions:

1. The course designated must lie outside the student's Concentration Program.
2. The student must have the permission, in advance, of the instructor of the course.
3. The student should perform the work and otherwise fulfill all the regular requirements of the course to the satisfaction of the instructor.
4. If the student fails to achieve a minimum standing of performance sufficient for credit, the student would receive no credit for the course, but with the instructor's approval, be recorded as having audited the course.

WPI Recommends Committee's Plan . . .

(Cont. from p. 5, col. 6)

be interpreted as disparaging other courses or departments.

Encourage individual conferences with students to discuss academic difficulties, as soon as these difficulties become apparent.

Try to determine if academic difficulties are the result of non-academic causes, and to refer the student to his adviser, department head, or the Dean of Students if the problem cannot be resolved by the faculty member.

To The Student

Bear in mind there is a minimum acceptable standard of personal appearance. Invite members of the faculty and administration to student functions and living units.

Maintain a check list of what he does not understand thoroughly so that he can be specific in seeking help from the faculty.

Ford Supports IIE Program Through Grant

The first full-scale exchange program with Eastern Europe since World War II will enter its third year under the support of a new \$325,000 Ford Foundation grant to the Institute of International Education, IIE of President Kenneth Holland announced recently. The Ford Foundation Polish Program has been gradually opening cultural contacts between Poland and the United States since the fall of 1957.

Administered in the United States by IIE, the exchange program began after Poland's 1956 uprising resulted in the easing of international travel restrictions. Since then, the program has brought approximately 75 Polish professors and specialists to the United States and provided for 15 American professors to travel to Poland as consultants, lecturers and special researchers.

The new grant is the fourth which IIE has received from Ford for support of the Polish Exchange Program.

Wives' Group Plans Meeting, Guest Speaker

Dr. Frank Schramm will be the guest speaker at the next meeting of the Moravian Student Wives Club to be held Tuesday, Nov. 2.

At this meeting a vice-president will be elected. These events were announced at the last meeting of the group, held on Oct. 5.

Mrs. James Martin presided over the meeting and Mrs. Richard Kosman was elected corresponding secretary. Also elected was Mrs. George Newpauer, who will serve as refreshment committee chairman.

Mrs. Daniel Gilbert is faculty advisor to the group.

Grass . . .

(Cont. from p. 2, col. 3)

tion has it that the entire shipment was hijacked by a band of black cloaked bandits. They are holding the books for ransom and have refused to give them back until their terms are met. They all want a free meal in the Lear-a-teria.

Have a nice weekend!

PATRONIZE
OUR
ADVERTISERS

SCAVO'S BARBER
SHOP
1422 CENTER ST.
UN 6-6922

Phone UN 6-7293

Beauty Lounge

Verna K. Diehl
504 MAIN ST. BETHLEHEM, PA.

PARKER'S

Grocery Store

554 MAIN STREET

Two Four Six Eight.
Cookies, Cheeses, Candy,
Cake
Parker's foods are really
great!

WE'VE MOVED
LP Records — Sale Priced
Band Instruments—Phonos
* * * * *
KEMPFER MUSIC
526 MAIN ST.

THE COLLEGE SHOP

1025 N. Main St.
STEAKS — HAMBURGERS
HOT DOGS—SANDWICHES
Open Until 11 P.M.
BILL POTTS, Proprietor

KEN'S GULF
SERVICE
BROAD & CENTER STS.
UN 6-9516

MILGREEN'S
5 & 10c Store
25 W. Broad St.
BETHLEHEM, PA.

Tom Bass --- TIGER HALL

Traditional Clothes for Boys and Girls

518 Main St., Bethlehem

Phone UN 6-3811

Serving Bethlehem for 54 years with all lines of

INSURANCE

THE WOODRING-ROBERTS CORP

459 MAIN STREET

(3 Doors Above Hotel Bethlehem)

TELEPHONE UN 7-4168 — UN 7-4169

(Brokers For Moravian College)